

Model type:

XWSA61253WEU

Commercial code:

F085625

General notes

Technical Documentation guidelines

You can find herewith some generic information to simplify consulting of technical documentation:

1. Models of same range share the same exploded views, which report the richest set of spare parts: generally, a model does not necessarily have a related spare part for each particular shown on exploded views.
2. Some spare parts can not be represented directly on the exploded views (instruction booklets, specific kit, etc...). You can find those codes in the spare parts list with the same reference of particular where spares are installed or with references 099, 999. Instruction booklets, once managed, appear with 000 reference.
3. On the higher right site of each exploded view there is a serial number which indicates the beginning of the production of certain range: some models might have more than an exploded view for a given category, each distinguished by a different serial no. and linked to another spare parts list. In this case, serial no. is required to supply the right spare part code. Exploded view to be considered is the one with a more recent serial no. but previous than the one of the model that needs assistance.
4. Exploded views might require further updates even after publishing. Addition of new spares will go on following the already existing numeration references. Revision number of an exploded view is shown into last four digits of serial number into upper right hand corner.
5. The spare parts list associated to an exploded view shows related codes of spares managed for a certain model; for each spare part other informations are available:

REF: reference no of spare into a table; SUBSTITUTE: list of spare(s) which can replace a code but that keeps same functional characteristics

INDUSTRIAL CODE: list of variables of a model (shown into model label) where such spare is used; NOTICE: code of information(s) to refer to complete technical intervention, track for changes or to find correct spare part code.
6. Some notices, into a same section are generic therefore cannot be directly linked to a spare part. In order to assist a model in the best way as possible, it is helpful to pay attention to all notices and constantly verify documentation updates
7. Technical documentation cover shows model name and its commercial codes

Exploded views



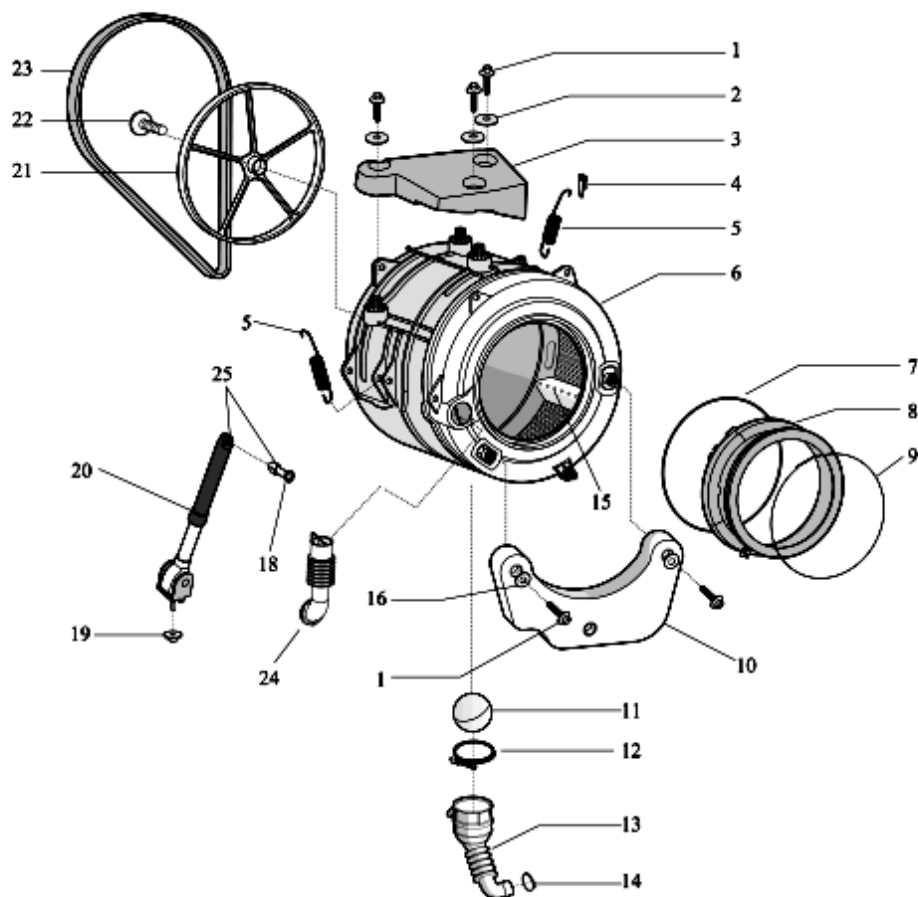
1350120

Spare parts list

Ref.	Code	From	To S/N	Substitute	Description	Notice	Industrial
001	C00305259 -				worktop - polar white indesit		
002	C00298959 -				display led plus innex		
003	C00272394 -				screw vite plst 3x12 tsp		
003	C00298960 -				pcb support led plus innex		
004	C00298341 -				pushbutton on/off pw innex indesit		
005	C00298348 -				button push & wash innex		
006	C00298339 -				pushbutton start/pause pw innex		
007	C00298982 -				pilot lamp lens horizontal led plus		
008	C00298985 -				option light guide vertical led plus		
009	C00298961 -				option button ppw ledplus innex		
010	C00298963 -				option button ppw ledplus innex		
011	C00298964 -				wash timer knob pw innex indesit		
012	C00305260 -				door frame+glass 460 wm pw/		
013	C00298941 -				door handle kit indesit innex (pw)		
014	C00298337 -				plinth white pw indesit priinnexme		
015	C00296866 -				foot		
016	C00083828 -				foot spring (11x8.5mm)		
017	C00096210 -				screw self tapping		
018	C00255430 -				door hinge		
021	C00267086 -				rear cover - white pw radom.		
022	C00141387 -				cable clamp hose		
023	C00112735 -				cap serial port		
024	C00305253 -				cabinet white pw 360 slim innex		
026	C00046667 -				wiring stop		
026	C00064550 -				drain hose holder		
026	C00091904 -				cable clamp hose		
027	C00196237 -				self-tapping screw l= 85 d= 8		
027	C00259495 -				transit bolts kit (1 screw + 1		
028	C00305542 -				control panel+handle xwsa 61253		

1350210

Exploded views



1350210

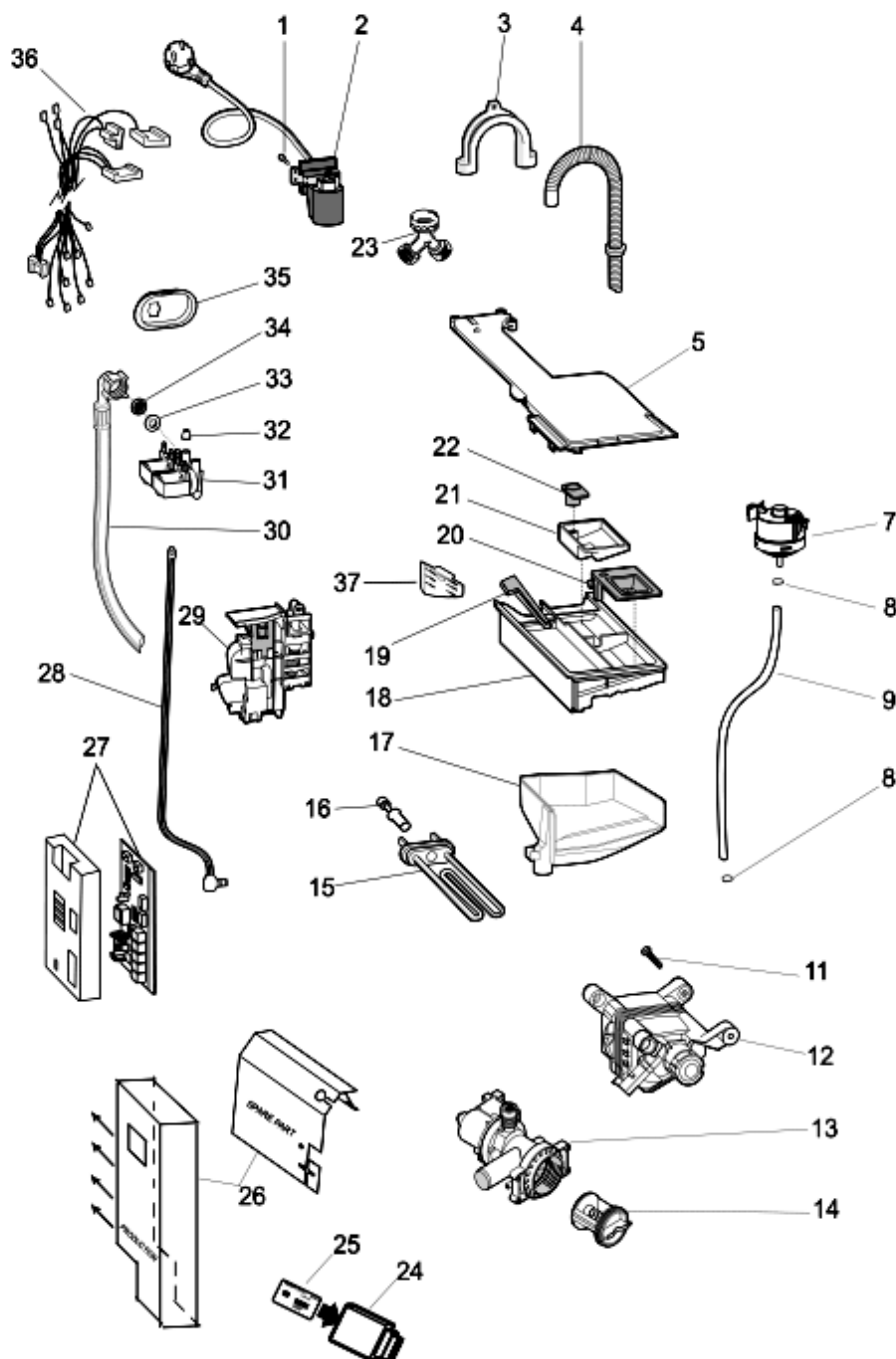
1350210

Spare parts list

Ref.	Code	From	To S/N	Substitute	Description	Notice	Industrial
001	C00194611 -				screw.pl28 9.5x50 tmtfr t40	n4011c00	
001	C00194612 -				screw larger diameter 11.3x50 kit	n4011c00	
003	C00303361 -				upper counterweight 12.5 kg innex		
004	C00141682 -				anchorage pad - suspension		
005	C00194248 -				suspension spring		
006	C00296156 -				tank plastic 40 ltr rad-305		
007	C00092155 -				door seal- rear retainer		
008	C00145390 -				door bellows seal wise		
009	C00092156 -				door seal retainer front		
010	C00145205 -				front counterweight 11,4 kg		
011	C00092172 -		50301...		ball oko evo ii		
012	C00094908 -				hose clamp		
013	C00296157 -		50208...	1 x C00378761	hose tank to filter snl prow		
013	C00345271 -	50209...			outlet hose slim		
014	C00092411 -			1 x C00094908	hose clamp		
015	C00097565 -				lifter		
018	C00280757 -				plastic expansion peg new		
019	C00065152 -				nut romob m6x22x1,5		
021	C00109632 -				drum pulley d=280 mm h= 20mm		
022	C00051739 -			1 x C00064786	m8 x 20 tefl. 10.9 screw		
				1 x C00143260			
023	C00144656 -				belt 1194 j5		
024	C00305255 -				hose dispenser to tank innex 305		
025	C00140744 -			1 x C00309597	shock absorber 100 n kit		

1350310

Exploded views



1350310

1350310

Spare parts list

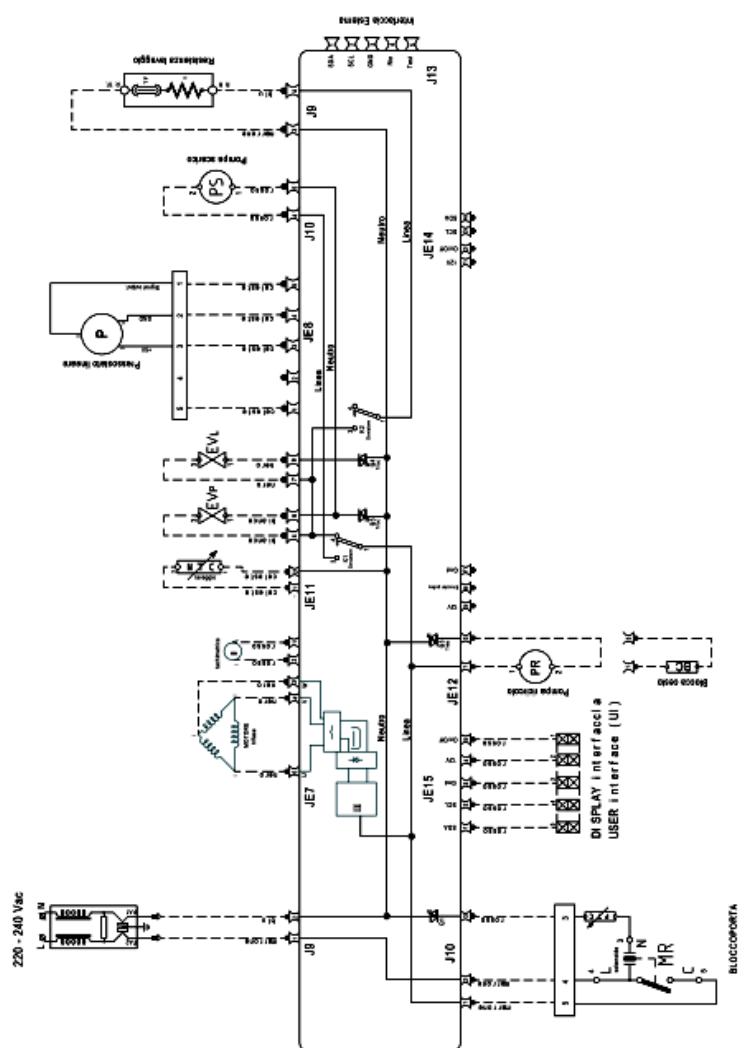
Ref.	Code	From	To S/N	Substitute	Description	Notice	Industrial
001	C00092348 -				self-scraping screw 3,5x8		
002	C00259297 -				supply cable 3 x 1.5 1,5mt shuko		
003	C00019902 -				plastic -u- to make drain hose		
004	C00091775 -				drain hose to sink l=1820 mm		
005	C00305254 -				hopper cover 360 innex		
007	C00289362 -				linear pressure switch 2,5		
011	C00094744 -				screw locking motor/tub		
012	C00196539 -				carbon brush (x2-fits welling		
012	C00263959 -				motor collector p52 1/2 1400g (hl)		
013	C00119307 -				drain pump		
015	C00094715 -				heating element 1700w		
016	C00083915 -				thermistor ntc		
017	C00298332 -				dispenser body indesit innex 9 kg		
018	C00298331 -				detergent drawer innex 9kg		
019	C00298333 -				drawer latch indesit innex		
021	C00298663 -				additive container indesit innex		
022	C00298334 -				stopper detergent container		
022	C00298664 -				cap for additive container innex		
024	C00272306 -				smart reader for card 8kb 32kb +		
025	C00305541 -		40729...		card xwsa61253weu 32kb sw		30856250100
025	C00309648 -	40730...			card xwsa61253weu 32kb sw		30856250195
							30856250295
027	C00298994 -		40729...		module arc2.75 coll. full ptc		30856250100
027	C00307218 -	40730...			module arc2.75 coll full wm		30856250195
							30856250295
029	C00283993 -		40729...	1 x C00303138	door interlock		30856250100
029	C00297327 -	40730...		2 x C00065185	door interlock rst 5 ptc autobloc		30856250195
				1 x C00303138			30856250295
030	C00003070 -				mains inlet hose cold 25c 10bar		
031	C00110333 -				fill valve 2 way (7lt rst 2.5)		
032	C00064534 -				seal - dispenser to valve		
033	C00005572 -				sealing washer-mains inlet hose		
034	C00005781 -				inlet hose filter		
035	C00267092 -				electrovalve support 1 ev		
036	C00259946 -				wiring heating element-filter		

1350310

Spare parts list

Ref.	Code	From	To S/N	Substitute	Description	Notice	Industrial
036	C00259947 -				wiring earth		
036	C00266848 -				wiring comunic. display		
036	C00272608 -				wiring evp evl ntc (module j012)		
036	C00290245 -				wiring pressure switch arcadia 2		
036	C00295379 -				cablage door lock+drain pump		
036	C00296200 -				wiring wash motor-module j9		
037	C00298968 -				divider for soap dispenser drawer		

Cod. 160026130



se160026130

Legend

Legend: 160026130