

Model type:

AQGMD129UK

Commercial code:

54741

General notes

Technical Documentation guidelines

You can find herewith some generic information to simplify consulting of technical documentation:

1. Models of same range share the same exploded views, which report the richest set of spare parts: generally, a model does not necessarily have a related spare part for each particular shown on exploded views.
2. Some spare parts can not be represented directly on the exploded views (instruction booklets, specific kit, etc...). You can find those codes in the spare parts list with the same reference of particular where spares are installed or with references 099, 999. Instruction booklets, once managed, appear with 000 reference.
3. On the higher right site of each exploded view there is a serial number which indicates the beginning of the production of certain range: some models might have more than an exploded view for a given category, each distinguished by a different serial no. and linked to another spare parts list. In this case, serial no. is required to supply the right spare part code. Exploded view to be considered is the one with a more recent serial no. but previous than the one of the model that needs assistance.
4. Exploded views might require further updates even after publishing. Addition of new spares will go on following the already existing numeration references. Revision number of an exploded view is shown into last four digits of serial number into upper right hand corner.
5. The spare parts list associated to an exploded view shows related codes of spares managed for a certain model; for each spare part other informations are available:

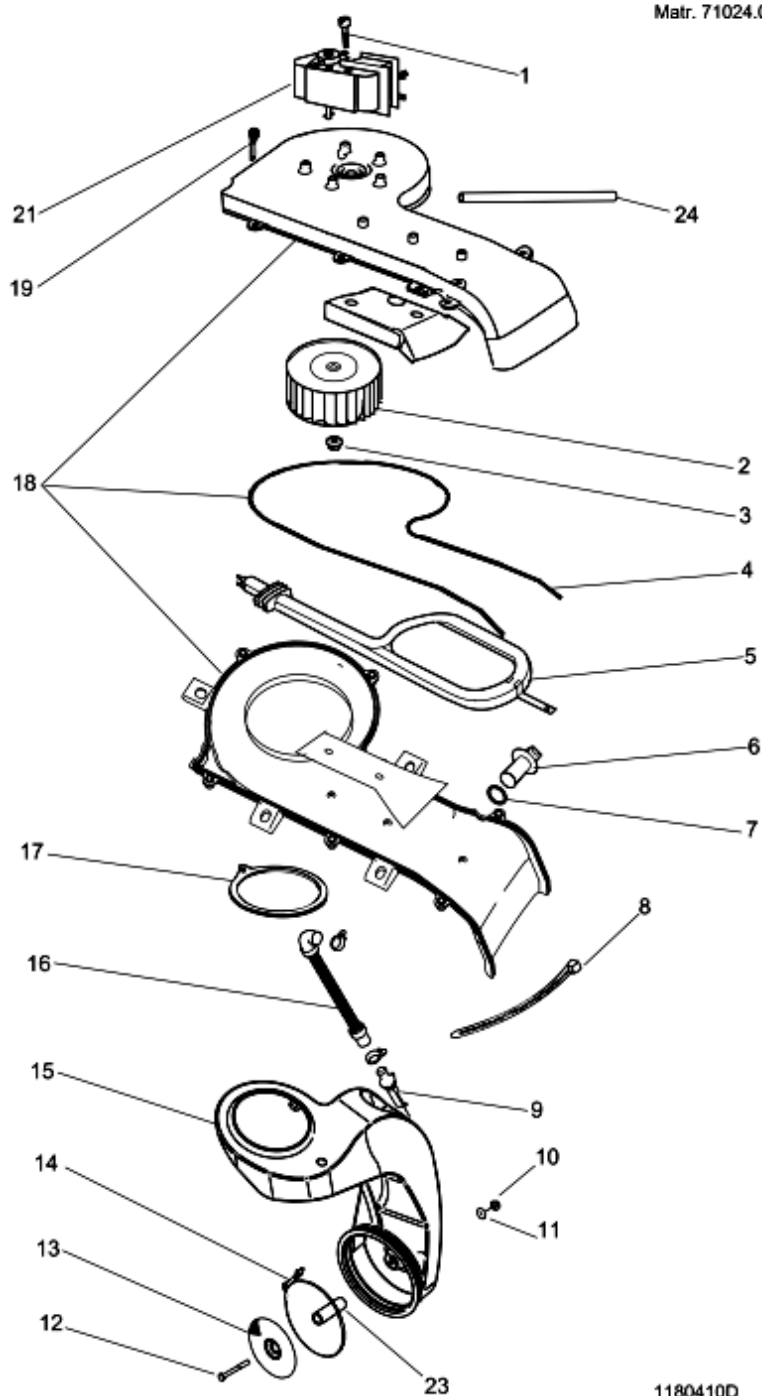
REF: reference no of spare into a table; SUBSTITUTE: list of spare(s) which can replace a code but that keeps same functional characteristics

INDUSTRIAL CODE: list of variables of a model (shown into model label) where such spare is used; NOTICE: code of information(s) to refer to complete technical intervention, track for changes or to find correct spare part code.
6. Some notices, into a same section are generic therefore cannot be directly linked to a spare part. In order to assist a model in the best way as possible, it is helpful to pay attention to all notices and constantly verify documentation updates
7. Technical documentation cover shows model name and its commercial codes

1180410D

Exploded views

Matr. 71024.0001



1180410D

1180410D

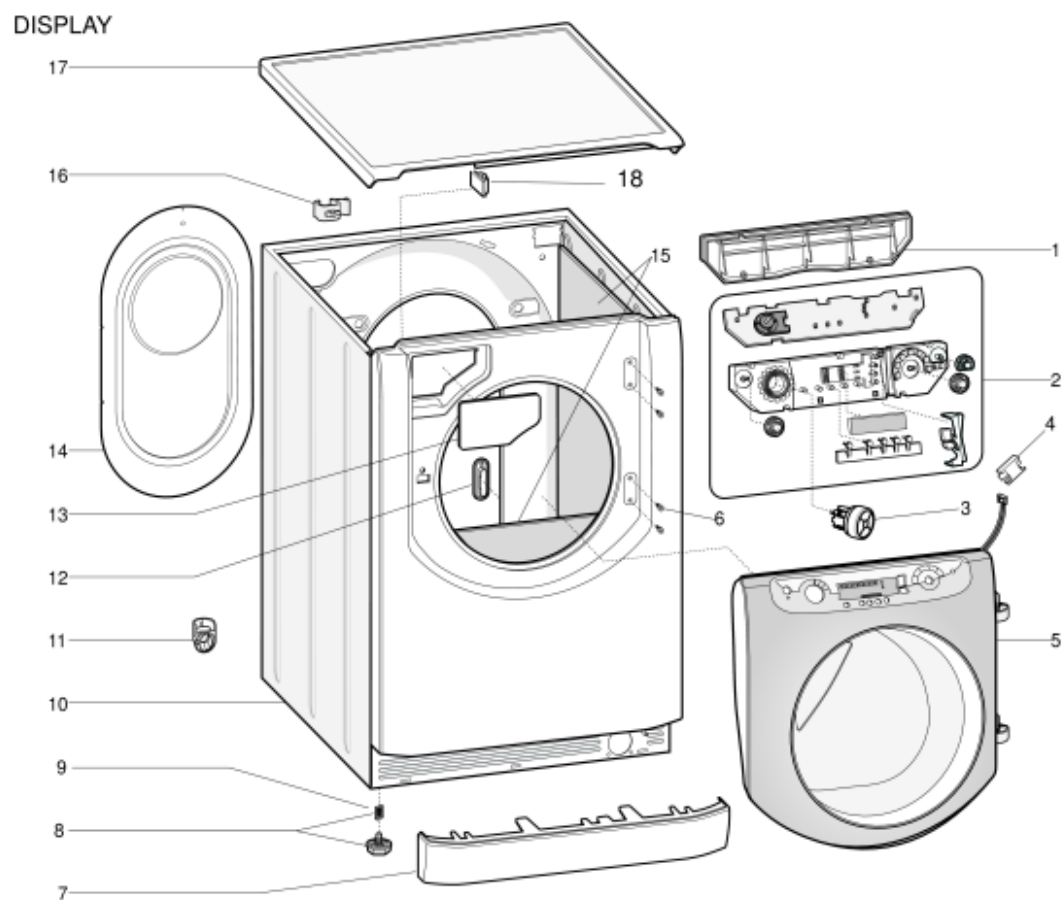
Spare parts

list

Ref.	Code	From	To S/N	Substitute	Description	Notice	Industrial
001	C00087921				screw amsp m3.5x30t.e.(s/n		
002	C00255435				blower fan for motor wd vpl		
003	C00032972				blower fixing nut		
004	C00255437				blower manifold seal vpl		
005	C00265612				dryer heating element 230v	n4208i00	
006	C00083915				thermistor ntc		
007	C00255434				o-ring d= 8.75 wd vpl		
008	C00255718				hose clamp		
009	C00032845				restrictor seat		
010	C00080960		00221...		self blocking nut m5	n4211c00	
011	C00097378		00221...		connection gasket	n4211c00	
012	C00259997		00221...		bolt m5x55 te inox430 x wd vpl	n4211c00	
013	C00143949		00221...		lint filter	n4211c00	
013	C00280633	00222...			steam filter new	n4211c00	
014	C00080774				hose clamp		
015	C00255440	00222...			steam condenser vpl	n4211c00	
015	C00280826		00221...		steam condenser vpl	n4211c00	
016	C00262693				hose electrovalve condenser		
017	C00255433		01211...		seal - condenser / tank vpl		
017	C00284582	01212...			seal - condenser / tank vpl		
018	C00264165			1 x C00268334	blower manifold kit vpl 62 lt		
019	C00054790				screw trilob m5 x 16 tcb t.e. st		
021	C00098711				dryer fan motor 230v 50hz wd-		
023	C00255439		00221...		spacer condenser	n4211c00	

1290140

Exploded views



1290140

1290140

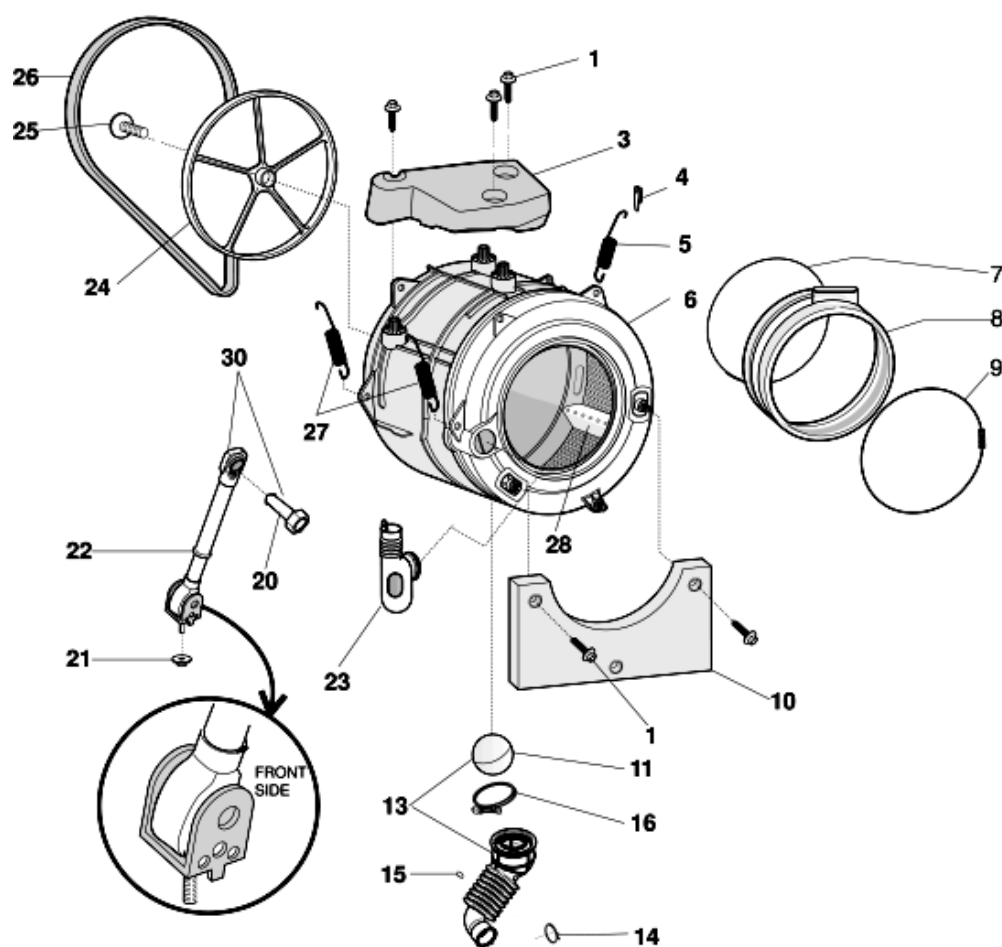
Spare parts list

Ref.	Code	From	To S/N	Substitute	Description	Notice	Industrial
000	C00095741				kit lock pachaging tub l=130 evo2		
000	C00145769				transit bolt		
000	C00264028				quick reference wd aqualtis en		
000	C00264029				instruction book uk		
000	C00265208				service manual		
001	C00119125				cover-plate white aqua		
002	C00262682				control display lcd 8 kg 8l aqgmd		
003	C00119386				programme selector knob		
004	C00145764				terminal connector 5-way aqx-et-		
005	C00264056			1 x C00276068	door frame assy aqgmd149uk		
006	C00119123				screw hinge 5 x 14 tmt		
007	C00119120				plinth white		
008	C00087084				foot		
009	C00083828				foot spring (11x8.5mm)		
010	C00119082				cabinet white pw 62 l aris.aqualtis		
011	C00064755				drain hose collar		
012	C00084817				blanking plate-rear(test plug)		
013	C00119214				drawer handle		
014	C00116923				rear cover - white pw		
015	C00143376				unsound kit new eco silent		
016	C00046667				wiring stop		
016	C00064550				drain hose holder		
016	C00091904				cable clamp hose		
017	C00264598				worktop - white pw aqualtis		
018	C00141387				cable clamp hose		

1290220

Exploded views

Matr. 80122.0001



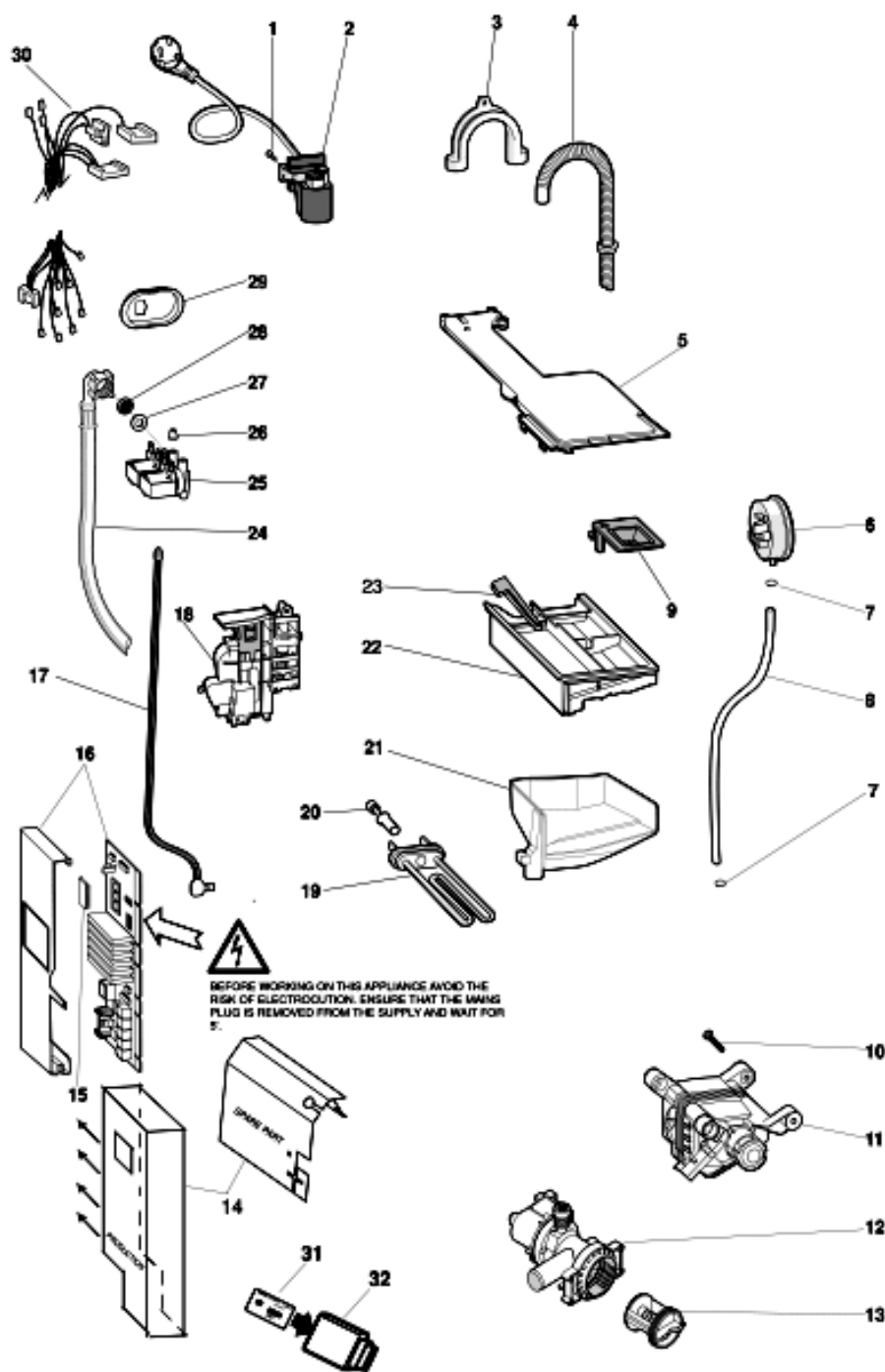
1290220

1290220

Spare parts list

Ref.	Code	From	To S/N	Substitute	Description	Notice	Industrial
001	C00194612				screw larger diameter 11.3x50 kit	n4011c00	
003	C00255400				upper counterweight vpl 9 kg wdl		
004	C00141682				anchorage pad - suspension		
005	C00119118				suspension spring		
006	C00262726				tank plastic 62l h=20 wd aq##		
007	C00119209				bellows clamp (tank front)		
008	C00262670				door bellows seal aqgmd vpl 30-		
009	C00119210				clamping ring - bellows seal front		
010	C00142175				front counterweight 12 kg		
011	C00092172				ball oko evo ii		
013	C00274662				outlet hose		
014	C00092411			1 x C00094908	hose clamp		
015	C00092412				hose clamp		
016	C00094908				hose clamp		
020	C00118593			1 x C00280757	plastic expansion peg		
021	C00065152				nut romob m6x22x1,5		
022	C00119111				shock absorber right aq 100 n		
023	C00262727				hose dispenser to tank vp-wd		
024	C00199343				drum pulley d=280 mm h=20 mm		
025	C00143260				drum pulley bolt m8x23 torx tefl		
026	C00119126				belt 1201 - 1198 j6		
027	C00119117				suspension spring - tank		
028	C00064789				lifter - extractable		
030	C00262816				shock absorber 100 n kit		

Exploded views



1290320

1290320

Spare parts list

Ref.	Code	From	To S/N	Substitute	Description	Notice	Industrial
001	C00092348				self-scraping screw 3,5x8		
002	C00115540			1 x C00119257	mains cable		
003	C00019902				plastic -u- to make drain hose		
004	C00142206				drain hose to sink 2,14 m		
005	C00119216				hopper cover 62lt		
006	C00110332				pressure switch 1 l.76-		
007	C00092412				hose clamp		
008	C00144077				pipe pressostat l= 540mm. evo ii		
009	C00119247				additive cover		
010	C00094744				screw locking motor/tub		
011	C00115310				tacho generator for motor ceset		
011	C00119188				motor three phase cim2-55 acc ad6		
012	C00145315				drain pump		
013	C00045023				filter handle		
013	C00045025				filter seal		
013	C00141034				filter element kit		
014	C00254409				protecting module (mylar) (hl)		
015	C00266072				eprom aqgmd129uk evoii sw		
016	C00254530				module 3ph inc eep (5 tag j4 +	n4008d01	
017	C00119221				door opening rod yellow		
018	C00264161				thermal lock		
019	C00255452				heater wash 1700/230 vpl wd		
020	C00083915				thermistor ntc		
021	C00119215				dispenser body		
022	C00119219				detergent drawer		
023	C00143513				slide opening spring (sn		
024	C00003070				mains inlet hose cold 25c 10bar		
025	C00110331				inlet valve - triple inline		
026	C00064534				seal - dispenser to valve		
027	C00005572				sealing washer-mains inlet hose		
028	C00005781				inlet hose filter		
029	C00064946				electrovalve support 1 ev		
030	C00115600				wiring motor/module		
030	C00115895				earth cable		
030	C00142747				harness fan motor mod. 3.5 .(hl)		

1290320

Spare parts list

Ref.	Code	From	To S/N	Substitute	Description	Notice	Industrial
030	C00252550				wiring electrovalve+ntc / module		
030	C00259777				wiring base z 24000109708z		
030	C00260010				wiring eva - ntcas 24000120200f		
030	C00260011				harness dryer heating element		
030	C00261791				wiring comunic. display -j11		
030	C00264172				wiring door switch d2 j4		
031	C00267787				card aqgmd129uk evoui8kb sw		
032	C00252539			1 x C00263927	smart reader for card 8kb		

Notices

n4008d01: MODULE / SMARTCARD / WIRING

Beginning April 2008 the spare parts warehouse started to manage the EVOII modules with a fixed (welded) eeprom, these can only be programmed with a Smart Card, EMIT or PC.

Note;

NOT ALL OF THIS INFORMATION MAY BE RELEVANT TO THE APPLIANCE BEING WORKED ON

The premodification service module with eeprom socket can be programmed with Smart Card, Emit or PC by using a blank eeprom or with a pre programmed eeprom.

The settings file description i.e. EEP WD420 2.7 H & C' will disappear from parts lists and be replaced with, SMARTCARD 2.7 H & C WD420 the programme files are the same.

For none EMIT users to programme the new version of module a programmed Smart Card (see parts list) will be required along with a Smart Card reader, part code C00252539.

Note;

The programmed Smart Card can only be used for one programming application

3.5 Software replaced 2.74 Software from S/N 51003.0001 (Ater Date Code 45)

Module Wiring Change

On Kimmel Park manufactured washer dryers (factory code 94) produced from serial number 61101.0001 the module connection J10 to the dryer heater box change from a single connection to a double connection identified by reference J13 & J14.

When fitting this module to a product produced before serial number 61101.0001 it will be necessary convert the J10 connection to J13 & J14 by fitting harness part codes C00142746 & C00142747. The module programme and function is not affected.

On Aqualtis models the in line filter was deleted from serial number 70714.9999 with this change the module also changed. The change as at J1, upto 71407.9999 = 4 way connector, from 70715.0001 = 2 x 2 way connector.

C00254530 5 tag @ J4 - J10 2x2 way connectors @ J1 welded eeprom

C00259738 5 tag @ J4 - J10 2x2 way connectors @ J1 eeprom socket from s/no 70715.0001

C00254533 7 tag @ J4 - J13 & 14 1x4 way connector @ J1 welded eeprom

C00143060 7 tag @ J4 - J13 & 14 1x4 way connector @ J1 Eep Socket to s/no 70714.9999

n4011c00: Counterweight screws

Use code C00194612 (screw with larger diameter) in case of fixing counterweight on the original plastic tub of the machine

Use code C00194611 in case of fixing counterweight on a new plastic tub used as spare part

n4208i00: BLOWER MAINFOLD KIT AND DRYER HEATING ELEMENT

Important! On products with serial number prior to 80615..... (before 15 June 2008) when changing the dryer heating element it is of paramount importance that you order also the blower manifold kit spare part code C00268334

n4211c00: INTRODUCED NEW LINTER FILTER

When the pre-modification items are no longer available, all new parts will have to be ordered and replaced.